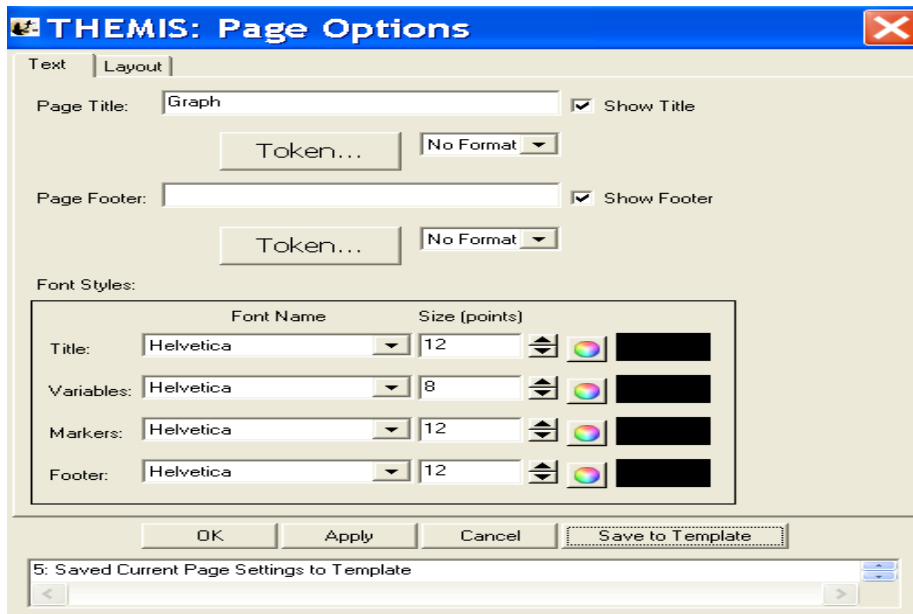


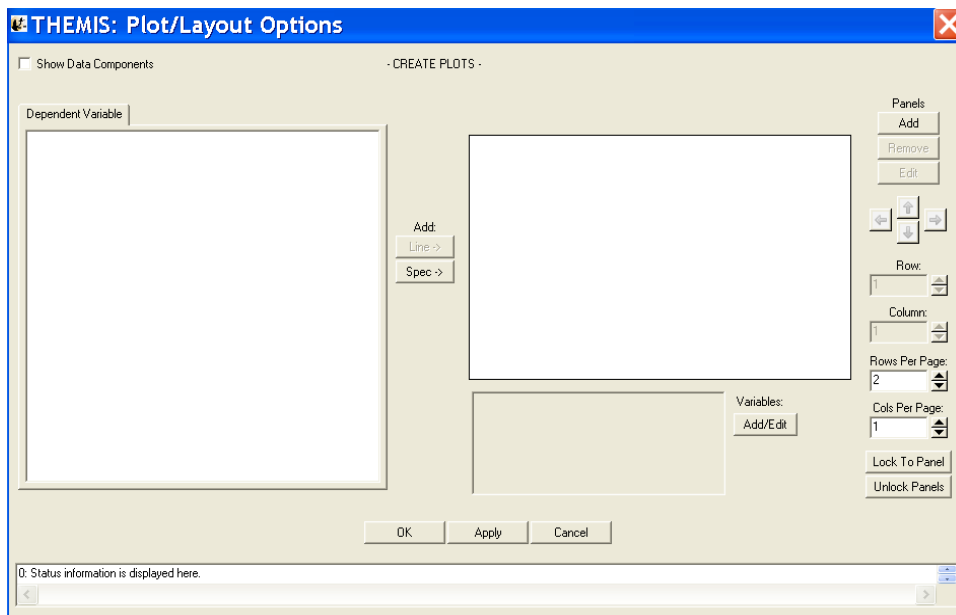
THEMIS Software Users,

The THEMIS Project announces the release of Version 5.20 of the THEMIS Science Data Analysis Software. Version 5.20 contains the following significant New Features and Enhancements to the THEMIS Graphical Users Interface (GUI):

- User setting profiles are now supported in the GUI. All plot settings, (colors, ranges, fonts, ticks) can be save to a GUI template and loaded on starting a new session. This allows the user to change the defaults to custom settings. Note: The “Save to Template” button at the bottom right of the Page Options panel displayed below. Most panels under the Graph Pull Down Menu now have this feature.



- Two new buttons 'Line' and 'Spectra' have been added to the Plot/Layout option under the Graph pull down to allow for easier, quicker, and more intuitive selection of plot data types.



THEMIS Science Team